



Accommodation Sheet

General information

Accommodation name	Hotel Vele Storiche Pisane
Typology	Hotel/Residence
Address	Via Ranuccio Bianchi Bandinelli, 6
City	Pisa
Contacts	Tel +39 050 563117 050 9911063 Email: booking@velestorichepisane.it
Website	www.velestoriche.it/en
WCAG 2.1 compliant accessible website	NO
Online bookings	YES
Short description	The property is 300 metres from the station and 950 metres from Campo dei Miracoli. It offers modern accommodation, a large garden and free parking. Le Vele Storiche Pisane offers rooms and apartments with free Wi-Fi and air conditioning.

TESTED AND REVIEWED BY: [Handy Superabile Social Promotion Association](#) in 2024

Please note The following information refers to the date of verification shown at the bottom of each sheet. **The Association** is not responsible for any significant changes made by the property after the visit.





Summary

Accommodation sheet	1
General information	1
Arrival at the property.....	3
How to reach the property.....	3
Patwayh from the private/public car park to the entrance	5
Entrance to the structure.....	6
Hall - Reception	8
Rooms/apartments	9
Rooms/apartments adapted for guests with reduced mobility.....	9
Toilet facilities in the guest room for guests with reduced mobility.....	12
Bar/restaurant	13
Internal pathways and common services	16
Internal pathways.....	16
Medical practices/healthcare facilities.....	17





Arrival at the property

How to reach the property

By car

from the north: A12 motorway exit Pisa Nord, take the SS Aurelia towards Pisa and follow the signs for Duomo-Piazza dei Miracoli. Follow Via delle Cascine, then turn right into Via Bonanno Pisano until you reach Piazza Manin (3.5 km from the airport and 500 m from the hotel), or continue from Via delle Cascine into Via Contessa Matilde and turn right into Via San Ranierino and then left into Via Cardinale Maffi (about 200 m), right into Via S. Tommaso and right into Via Capponi, to Piazza Arcivescovado (about 6 km from the airport and 150 m from the hotel)

from the south: SS1 Grosseto Rosignano variant, then take the A12 motorway to the Pisa Nord exit, take the SS Aurelia towards Pisa and follow the signs for Duomo-Piazza dei Miracoli. Follow Via delle Cascine, then turn right into Via Bonanno Pisano until you reach Piazza Manin (3.5 km from the airport and 500 m from the hotel), or continue from Via delle Cascine into Via Contessa Matilde and turn right into Via San Ranierino and then left into Via Cardinale Maffi (about 200 m), right into Via S. Tommaso and right into Via Capponi, to Piazza Arcivescovado (about 6 km from the airport and 150 m from the hotel)

For holders of disabled badges it is also possible to circulate in the ZTL by requesting access to the Electronic Gates office by calling the number 0508669113





By plane	
Assistance service for people with disabilities	YES
Embarkation/disembarkation of passengers with reduced mobility	with courtesy chair and ambulift /Finger. Full assistance is provided on departure and arrival.
Tactile paths for the blind and visually impaired	YES, there are LOGES routes complete with tactile maps to facilitate movement.
There is a toilet room accessible with grab handles	YES
Presence of shuttle to station	YES. Automated ecological shuttle "PEOPLE MOVER" to Pisa central station.
By train	
Nearest station	name Pisa 300 meters away
Assistance service for people with disabilities	YES
Eventual notes	<p>Entrance to the station on level ground and smooth flooring inside. The ticket office has 5 counters. Presence of automatic ticket office with keypad placed 135 cm from the ground.</p> <p>Assistance service is provided by reservation: Email SalaBlu.Firenze@rfi.it or by calling the toll-free number 800906060 from a landline and from a mobile phone to the number 02323232 then dialing the area code of the place where assistance is requested.</p> <p>Access to the carriages is by forklift, or, only in some trains, by means of a lift placed at the entrance of the dedicated carriage, or by means of a removable slide for some carriages without a difference in height.</p>

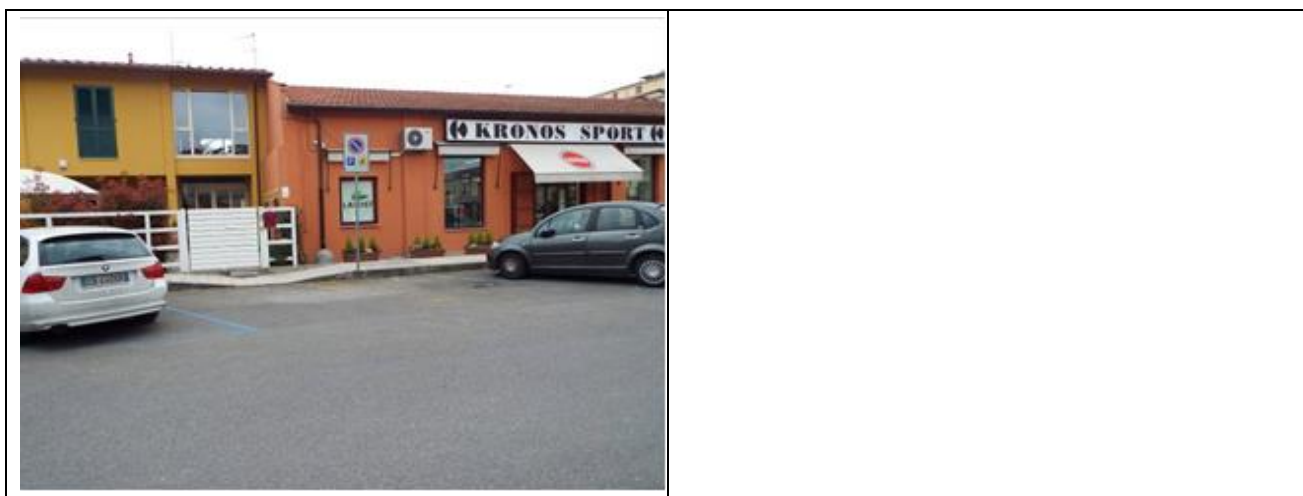




Pathway from the private/public car park to the entrance

Presence of private parking	YES
Presence of parking space reserved for people with disabilities	NO
Type of flooring of the private parking lot	Asphalt and gravel
Eventual notes	<p>The car park is located at the back and can be reached via a short driveway on the left side of the structure, paved with beaten gravel, with no spaces reserved for the disabled. 1 place dedicated to people with reduced mobility is located next to the main entrance.</p> <p>The Residence is however available to reserve a parking space for customers with disabilities.</p>





Entrance to the structure

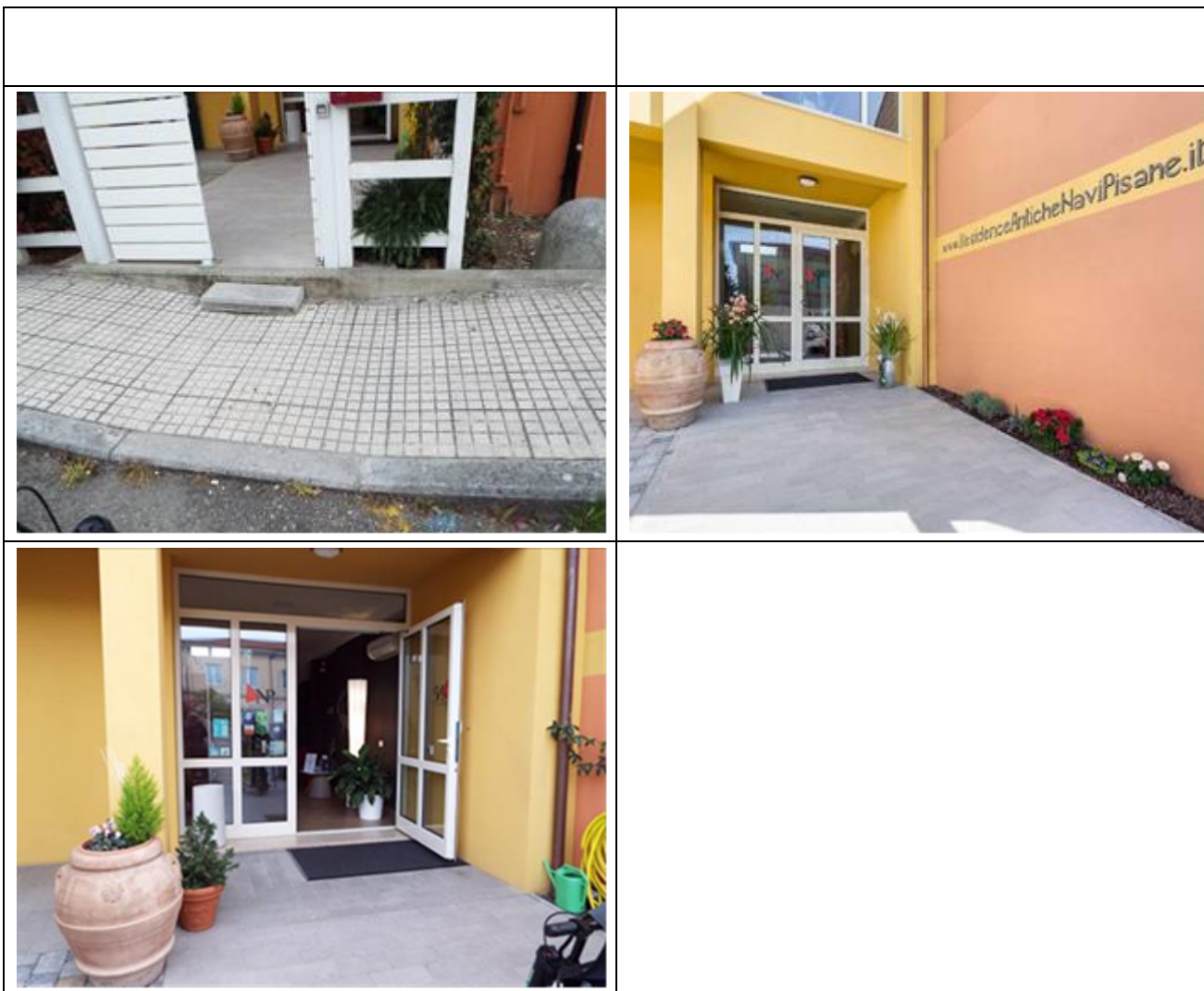
There is an accessible entrance	YES main entrance
How to access the structure	<input checked="" type="checkbox"/> on level ground through a connected pavement. From the sidewalk, the courtyard is accessed through a two-leaf gate, with a useful width of more than 90 cm, and two steps, 4 and 15 cm high, which can be overcome via a removable ramp
Type of entrance door	sash
Useful width of door/entrance gate	Above 90 cm
There are indicators and tactile maps	NO
Eventual notes	The main entrance door can be opened outwards, with a lever handle.



Project promoted by



Regione Toscana



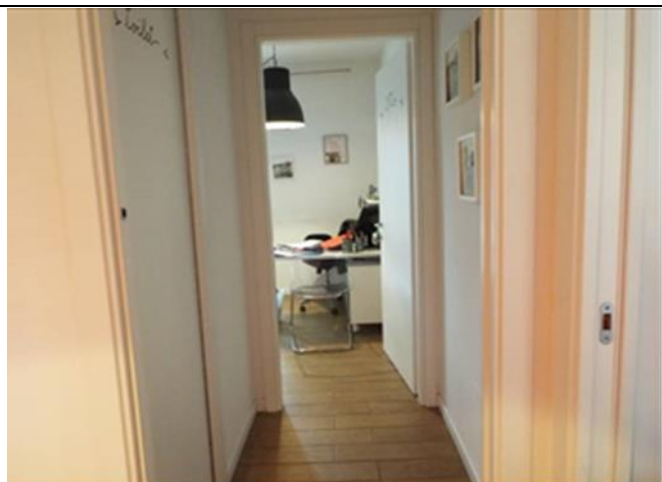
Project carried out with the contribution of the



**Presidenza del
Consiglio dei Ministri**
Ministro per la disabilità



Hall - Reception

How to reach it from the entrance	flat
Reception desk height	Less than 100
Presence of multilingual staff	YES
Type of information material	Not detected
Initial assistance is provided for visitors with disabilities	<input checked="" type="checkbox"/> YES with orientation tour of the structure <input checked="" type="checkbox"/> YES with room accompaniment
The following aids are provided for visitors with disabilities	<input type="checkbox"/> manual wheelchair <input type="checkbox"/> Crutches <input type="checkbox"/> Comfortable shower chair
The staff followed a training course on welcoming people with different disabilities	NO
	





Rooms/apartments

Rooms/apartments adapted for guests with reduced mobility

Number and type of rooms/apartments equipped/usable by people with reduced mobility	<input checked="" type="checkbox"/> Apartments BILO 2 Num .
Access to the apartment	<input checked="" type="checkbox"/> flat from the main entrance, through a short external path, with smooth tile flooring.
Type of entrance door	with bar handle
Usable width of entrance door	97 cm
Bed type and height	double bed about 54 cm high
Free spaces on the sides of the bed	left 54 cm right 58 cm frontal 130 cm
Cabinet Type	without doors
Free space under the desk	72 cm
In-room options are available	<input checked="" type="checkbox"/> safe <input checked="" type="checkbox"/> minibar <input checked="" type="checkbox"/> Water Kettle <input checked="" type="checkbox"/> Iron
There is a terrace/balcony/garden (useful door width)	NO
Eventual notes	The apartment has a living room with kitchenette. The kitchenette is equipped with a sink, hob, wall units (base not adapted for wheelchair approach), fridge, 4-stem table, with free space underneath of more than 65 cm. In the living room there is also a double sofa bed. The living room leads to the double bedroom. The





	<p>narrowest point of the interior corridor leading to the bedroom is more than 80 cm.</p>



Project promoted by



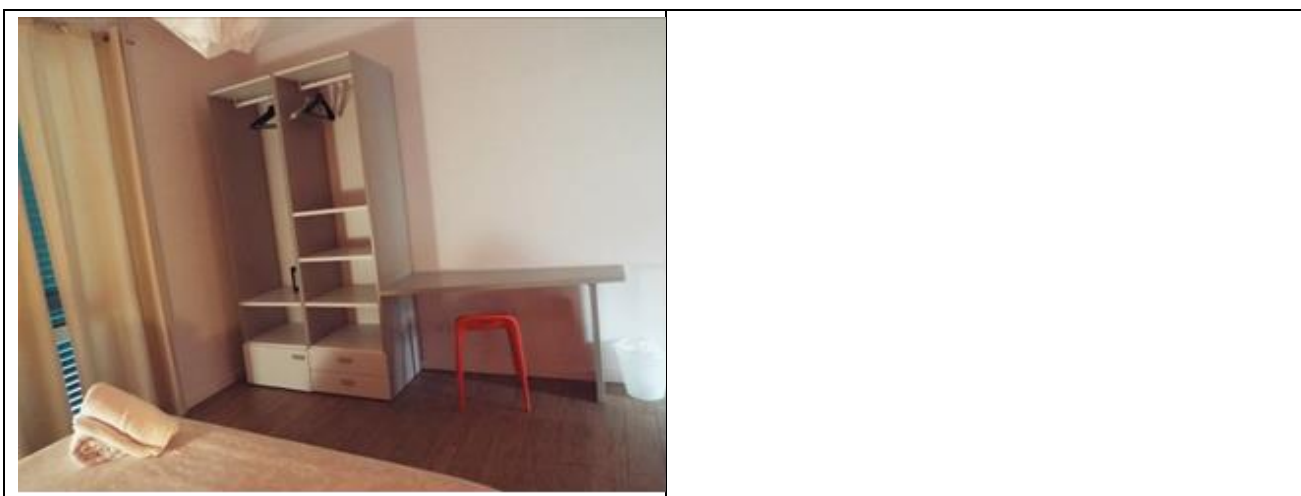
Regione Toscana



Project carried out with the contribution of the



Presidenza del
Consiglio dei Ministri
Ministro per la disabilità



Toilet facilities in the guest room for guests with reduced mobility

Access to the premises	flat
Usable width of the entrance door	86 cm
Type of door	sash
Type of handle	lever
Toilet height	50 cm
Toilet seat with open front tooth	YES
Support handles	Missing
Flexible shower on the side of the toilet	YES
Free space on the sides of the toilet	left 32 cm right greater than 90 cm if without a box wall, otherwise it is 25 cm frontal Above 90 cm
Electric doorbell/telephone on the side of the toilet	NO
Washbasin with space underneath for wheelchair approach	70 cm
Height from the ground lower edge mirror	113 cm





	
Accessible shower available for guests with reduced mobility	YES flush with the floor
Type of shower	with folding or folding walls
Shower chair	h. 54 cm - dimensions 33 x 30 cm
Support handle	NO
Presence of shower head or sliding rails	Ups and downs with lowest point height 130 cm
Electric doorbell/telephone on the side of the shower	YES

Bar/restaurant

Type of venue	Breakfast room
Access to the premises	<input checked="" type="checkbox"/> flat
Useful width of door/entrance gate	74 cm
Height of the buffet counter	91 cm high
Types of tables	4-shank
Space under floor tables	70 cm
Availability of high chairs for babies	YES on request
Multilingual menu	NO

Project carried out with the contribution of the





Menu with app	NO
Braille menu	NO
Availability of foods for celiacs	<input type="checkbox"/> bread, pasta, biscuits, ice cream <input type="checkbox"/> <input type="checkbox"/> <input type="checkbox"/> <input type="checkbox"/> pre-packaged foods
There are coffee and milk dispensers	YES with button placed 128 cm from the ground
A customer with reduced mobility can always reserve the same table	YES
There are toilets that can be used by a guest with reduced mobility (see "accessible toilets in the internal paths and common services)	NO
There is an area reserved for lunch for younger guests	NO
A fully equipped baby feeding service is available	Not detected





	
<p>The restaurant has an outdoor veranda / dehors</p>	<p>YES with flat access</p>
<p>Types of tables</p>	<p>4-shank</p>
<p>Space under floor tables</p>	<p>70 cm</p>
	





Internal pathways and common services

Internal pathways

Approximate distances from the room/apartment/bungalow visited and intended for customers with disabilities up to the various main common areas	Entrance (Hall) m 50 Breakfast room 50 m
Indicate whether the paths connecting with the common areas are flat or with ramps or steps, in addition to those already described	Entrance (Hall) flat Breakfast room flat
From the visited room to the common areas there are maps and tactile signs for the blind	NO





Medical practices/healthcare facilities

Hospitals near the property	Pisano Cisanello University Hospital, Via Paradisa 2, Pisa – Phone +39 050 992111 Santa Chiara Hospital Via B. Pisano 10, Pisa - Phone +39 050 992111 Pronto Soccorso at Ospedale Cisanello, Pisa - Telephone +39 050 992300
Any dialysis facilities	Cisanello Hospital Pisa. In the period June-September holiday dialysis service with availability of n. 6 beds; The treatments will be divided into three days a week (Monday, Wednesday and Friday) in the evening from 18.00 to 24.00 Phone +39 050 997250/997253/997256 call from 8.00 a.m. to 2.00 p.m. Email nefrotrap.pisa@ao-pisa.toscana.it
Other healthcare facilities	San Rossore Nursing Home (Private Hospital) Via delle Cascine 152/F Phone +39 050 586111

